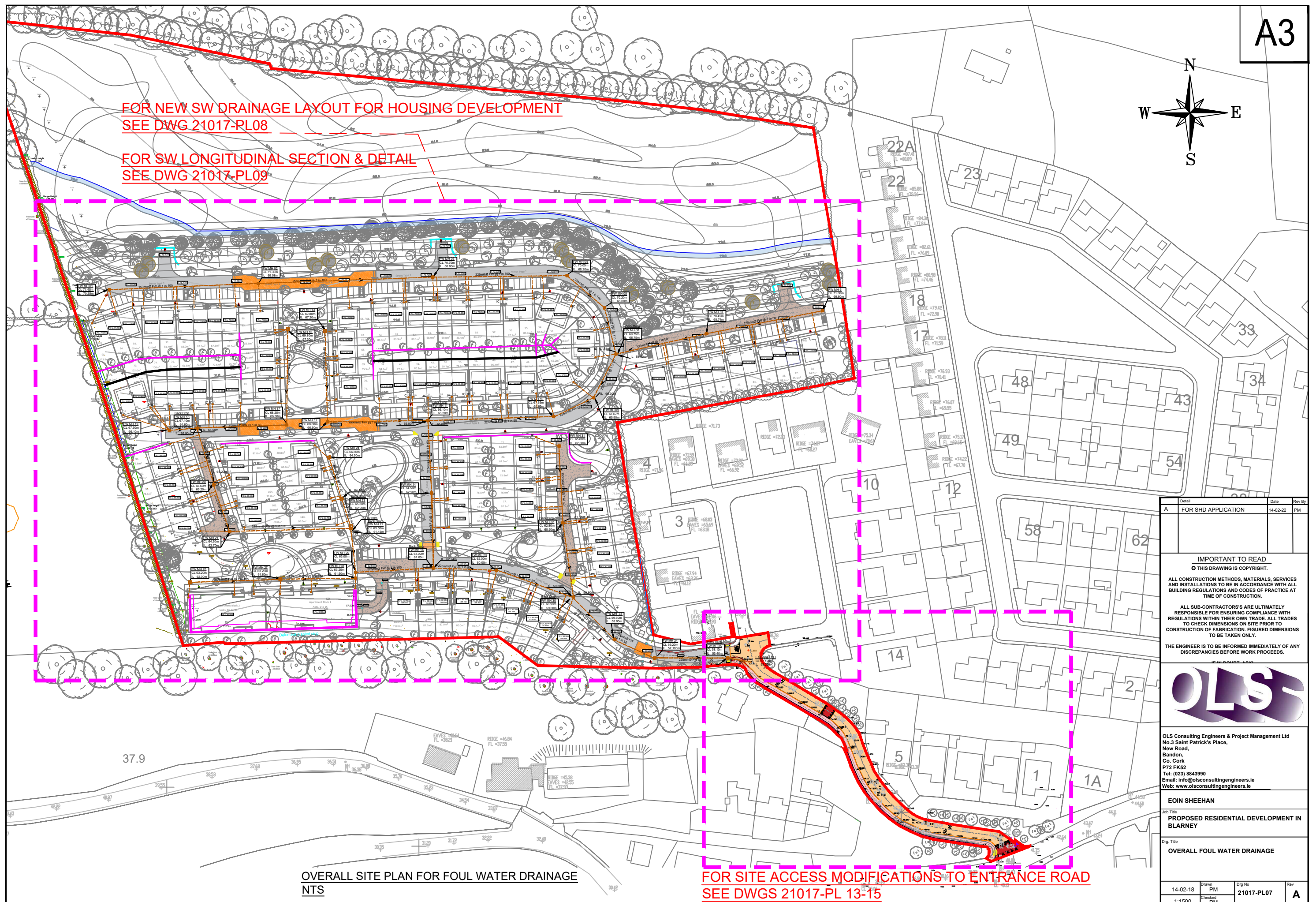


FOR NEW SW DRAINAGE LAYOUT FOR HOUSING DEVELOPMENT  
SEE DWG 21017-PL08

FOR SW LONGITUDINAL SECTION & DETAIL  
SEE DWG 21017-PL09



OVERALL SITE PLAN FOR FOUL WATER DRAINAGE  
NTS

FOR SITE ACCESS MODIFICATIONS TO ENTRANCE ROAD  
SEE DWGS 21017-PL 13-15


Detail	Date	Rev By
A	FOR SHD APPLICATION	14-02-22 PM

**IMPORTANT TO READ**  
© THIS DRAWING IS COPYRIGHT.

ALL CONSTRUCTION METHODS, MATERIALS, SERVICES AND INSTALLATIONS TO BE IN ACCORDANCE WITH ALL BUILDING REGULATIONS AND CODES OF PRACTICE AT TIME OF CONSTRUCTION.

ALL SUB-CONTRACTORS ARE ULTIMATELY RESPONSIBLE FOR ENSURING COMPLIANCE WITH REGULATIONS WITHIN THEIR OWN TRADE. ALL TRADES TO CHECK DIMENSIONS ON SITE PRIOR TO CONSTRUCTION OF FABRICATION. FIGURED DIMENSIONS TO BE TAKEN ONLY.

THE ENGINEER IS TO BE INFORMED IMMEDIATELY OF ANY DISCREPANCIES BEFORE WORK PROCEEDS.



OLS Consulting Engineers & Project Management Ltd  
No. 3 Saint Patrick's Place,  
New Road,  
Bandon,  
Co. Cork  
P72 FK52  
Tel: (023) 8843990  
Email: info@olsconsultingengineers.ie  
Web: www.olsconsultingengineers.ie

**EON SHEEHAN**  
Job Title  
PROPOSED RESIDENTIAL DEVELOPMENT IN BLARNEY

Dwg Title  
OVERALL FOUL WATER DRAINAGE

Dwg No	Drawn	Checked	Rev
21017-PL07	PM	PM	A

14-02-18  
1:1500